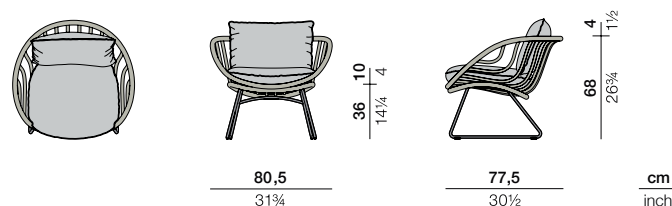


KIDA

LOUNGE CHAIR

Design by **Stephen Burks** | Ref. **CW4** | Weight **8,3 kg/4 lbs** | COM (Customer Own Material): **3,8 m/4.15 yds** (plain fabric only)

Measurements



Collection: With KIDA, Stephen Burks has designed a collection as delightful to look at as to use. This collection to be wrapped rather than woven in DEDON special Fiber Touch, features a cradle-like organic form that's open, airy, light and inviting.

Characteristics: Fresh, friendly, transparent, iconic, archetypal, geometric.

Frame: The seat frame is made of aluminum, and the base is constructed from stainless steel.

Frame Maintenance: Clean with a soft cloth or brush, warm water and a gentle cleanser, if needed.

Cushion Maintenance: The covers can be removed, and washed at 30 °C / 86 °F.

Craftsmanship in numbers: Length 326 m / 357 yds | **Weaving hours:** 24

Material Combinations

Fiber / Frame

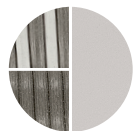
Combination 1

Combination 2

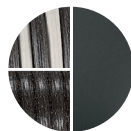
Combination 3



glow touch **170/**
lipari **304**



line touch **215/**
lipari **304**



shade touch **206/**
black pepper **317**

Additional Items



Cover
CJN

Cushions

Dry+ seat cushion
CXK + fabric code

B 62 cm x T 60cm x H 10 cm
W 24 1/2" x D 23 1/2" x D 4"

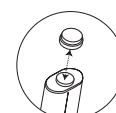
Back cushion
CXL + fabric code

B 55 cm x T 45 cm x H 15 cm
W 21 3/4" x D 17 3/4" x D 6"

Features



Contract



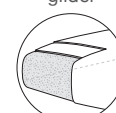
Interchangeable
glider



Cushion
holder



Assembly
required



Dry+
cushion

To learn more about DEDON, our collections and warranty policy, please visit our website –

[dedon.de](https://www.dedon.de)

8/24

DEDON