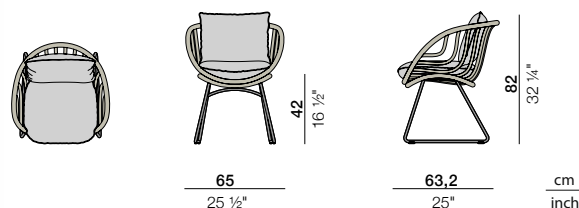


KIDA

Armchair

Design by **Stephen Burks** | Ref. **CJD** | Weight **6,8 kg/15 lbs** | COM (Customer Own Material): **1,2 m/1.30 yds** (plain fabric only)

Measurements



Collection: With KIDA, Stephen Burks has designed a collection as delightful to look at as to use.

This collection to be wrapped rather than woven in DEDON special Fiber Touch, features a cradle-like organic form that's open, airy, light and inviting.

Characteristics: Fresh, friendly, transparent, iconic, archetypal, geometric.

Frame: The seat frame is made of aluminum, and the base is constructed from stainless steel.

Frame Maintenance: Clean with a soft cloth or brush, warm water and a gentle cleanser, if needed.

Cushion Maintenance: The covers can be removed, and washed at 30 °C / 86 °F.

Craftsmanship in numbers: Length 280 m / 306 yds | **Weaving hours:** 10

Material Combinations

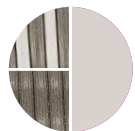
Fiber / Frame

Combination 1



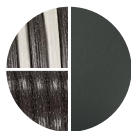
glow touch 170/
lipari 304

Combination 2



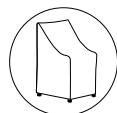
line touch 215/
lipari 304

Combination 3



shade touch 206/
black pepper 317

Additional Items



CJN
Cover

Cushions

Dry+ seat cushion*
CJM + fabric code

B 52 cm x T 56 cm x H 8 cm
W 20 1/2" x d 22" x H3 1/4"

weight: 0,8 kg

Back cushion
CJL + fabric code

B 45 cm x T 38 cm x H 6 cm
W 17 3/4" x D 15" x H 2 1/4"

weight: 0,6 kg

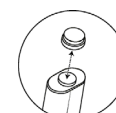
Fabrics

Cushions for this collection are available in all fabrics **Cat. A, B, C** excluding GLAN.

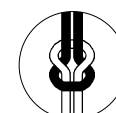
Features



Contract



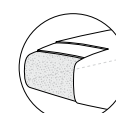
Interchangeable
slider



Cushion holder*



Assembly
required



Dry+ cushion

*Only the seat cushion is equipped with Dry+ functionality and a cushion holder.

To learn more about DEDON, our collections and warranty policy, please visit our website –

[dedon.de](https://www.dedon.de)

11/23

DEDON