

# FERREIRA DE SÁ

LUXURY RUGS SINCE 1946

BAMBOO  
TEXTURE EXPERIENCE



BAMBOO  
TEXTURE EXPERIENCE

# BAMBOO

## TEXTURE EXPERIENCE

Ferreira de Sá brings to you an exquisite range of Bamboo rugs in which expertise and creativity are expressed through unique techniques and texture variations.

The exploration of textures characterizes this timeless collection. Meticulous artisan detailing is asserted on refined, simple-structured pieces with beautiful textural effects, informal patterns, interlacing lines and stripes.

Rich, sensory, and crafted textures are exalted using a scope of colours, from the softest to the most vivid colour palette. Each rug presents several available format options, so you can find the perfect solution for your space.

---



# CONTENTS

Page 05

---

GESTURE

Page 11

---

TOPIARY

Page 15

---

TOPIARY CONCRETE

Page 20

---

PURE BAMBOO

Page 24

---

GRACEFUL

Page 29

---

CRISSCROSS

Page 35

---

WHORL

Page 39

---

OTHER SHAPES

Page 44

---

CARE AND MAINTENANCE

Page 09

---

LISTRA

Page 13

---

TOPIARY DUO

Page 16

---

FRESQUE

Page 22

---

ERTÉ

Page 27

---

WICKER

Page 33

---

TELHA

Page 37

---

ANEMONE

Page 43

---

KNOW YOUR RUG

Page 45

---

BAMBOO TOOL SET





# GESTURE

Granole



Technical Information:

Composition: Bamboo | Size: Ø200cm | Price Band: 3

When ordering our Bamboo rugs, please indicate the required shape. On page 40 are some suggestions.

Other colour options:



GESTURE Oyester



GESTURE Pacific



GESTURE Coral



GESTURE Russet

\*We advise to only use our printed or digital formats for colour reference purposes. Despite our colour corrections efforts and perfectionism when developing printed and digital formats, it's impossible to guarantee a 100% true match in colour. These formats do not replace the use of our pompoms and real samples when choosing and ordering our rugs.

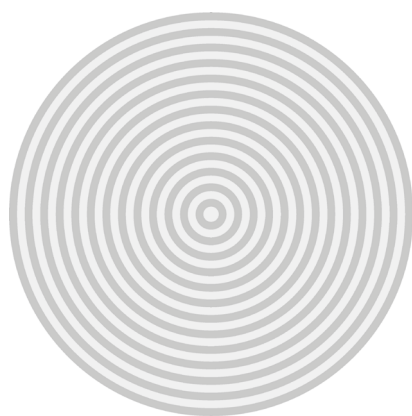






## GESTURE

We seek to develop solutions that meet the needs and tastes of our customers. In this specific case, you can choose to order this rug with gradient colour or in one solid colour only. Please note that the price band varies depending on this choice.



Mono colour  
transformation



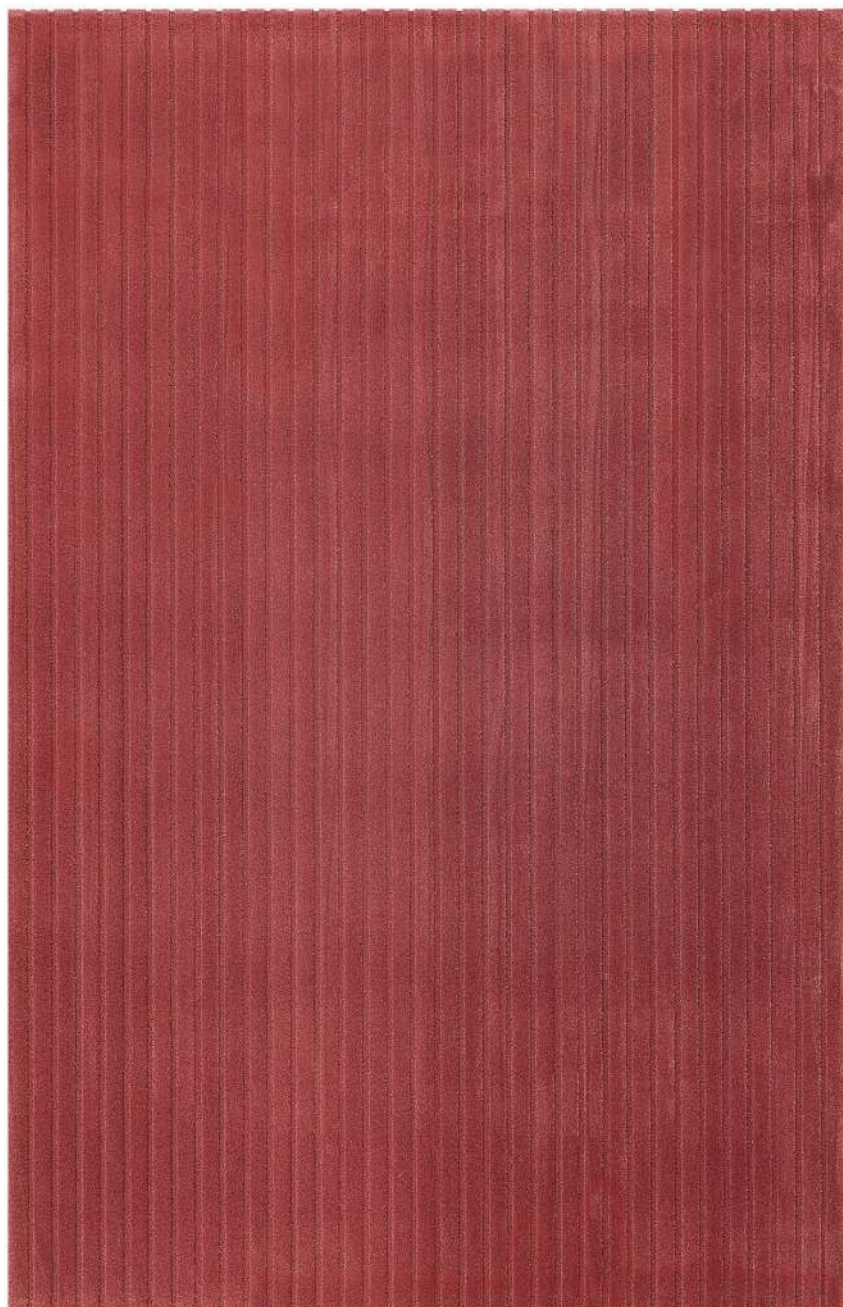
GESTURE Mono Colour  
Price Band: 0

\*Mono colour sample on the left page

GESTURE Gradient Colour  
Price Band: 3

# LISTRA

Copper



LISTRA Detail

Technical Information:

Composition: Bamboo | Size: 250x330cm | Price Band: 0

When ordering our Bamboo rugs, please indicate the required shape.

\*We advise to only use our printed or digital formats for colour reference purposes. Despite our colour corrections efforts and perfectionism when developing printed and digital formats, it's impossible to guarantee a 100% true match in colour. These formats do not replace the use of our pompoms and real samples when choosing and ordering our rugs.



# LISTRA

Gold



LISTRA Detail

## Technical Information:

Composition: Bamboo | Size: 200x300cm | Price Band: 0

When ordering our Bamboo rugs, please indicate the required shape.

\*We advise to only use our printed or digital formats for colour reference purposes. Despite our colour corrections efforts and perfectionism when developing printed and digital formats, it's impossible to guarantee a 100% true match in colour. These formats do not replace the use of our pompoms and real samples when choosing and ordering our rugs.

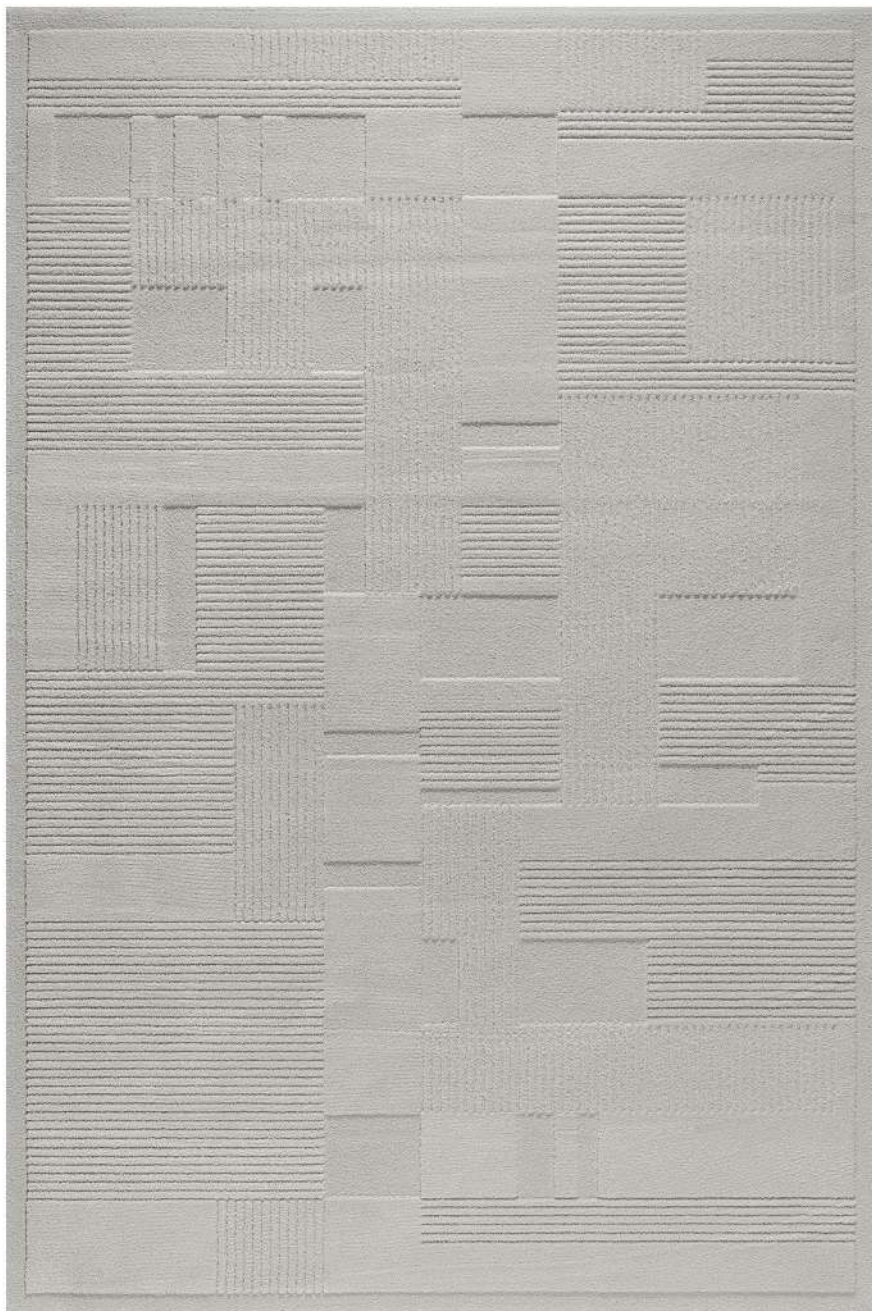






# TOPIARY

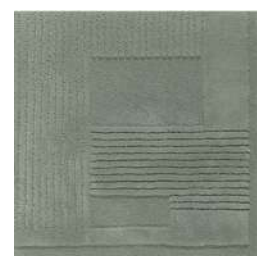
Cream



Other colour options:



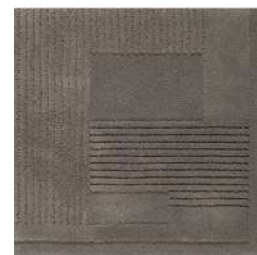
TOPIARY African Sand



TOPIARY Jadeite



TOPIARY Rosy Brown



TOPIARY Falcon

## Technical Information:

Composition: Bamboo | Size: 200x300cm | Price Band: 0

When ordering our Bamboo rugs, please indicate the required shape. On page 39 are some suggestions.

\*We advise to only use our printed or digital formats for colour reference purposes. Despite our colour corrections efforts and perfectionism when developing printed and digital formats, it's impossible to guarantee a 100% true match in colour. These formats do not replace the use of our pompoms and real samples when choosing and ordering our rugs.

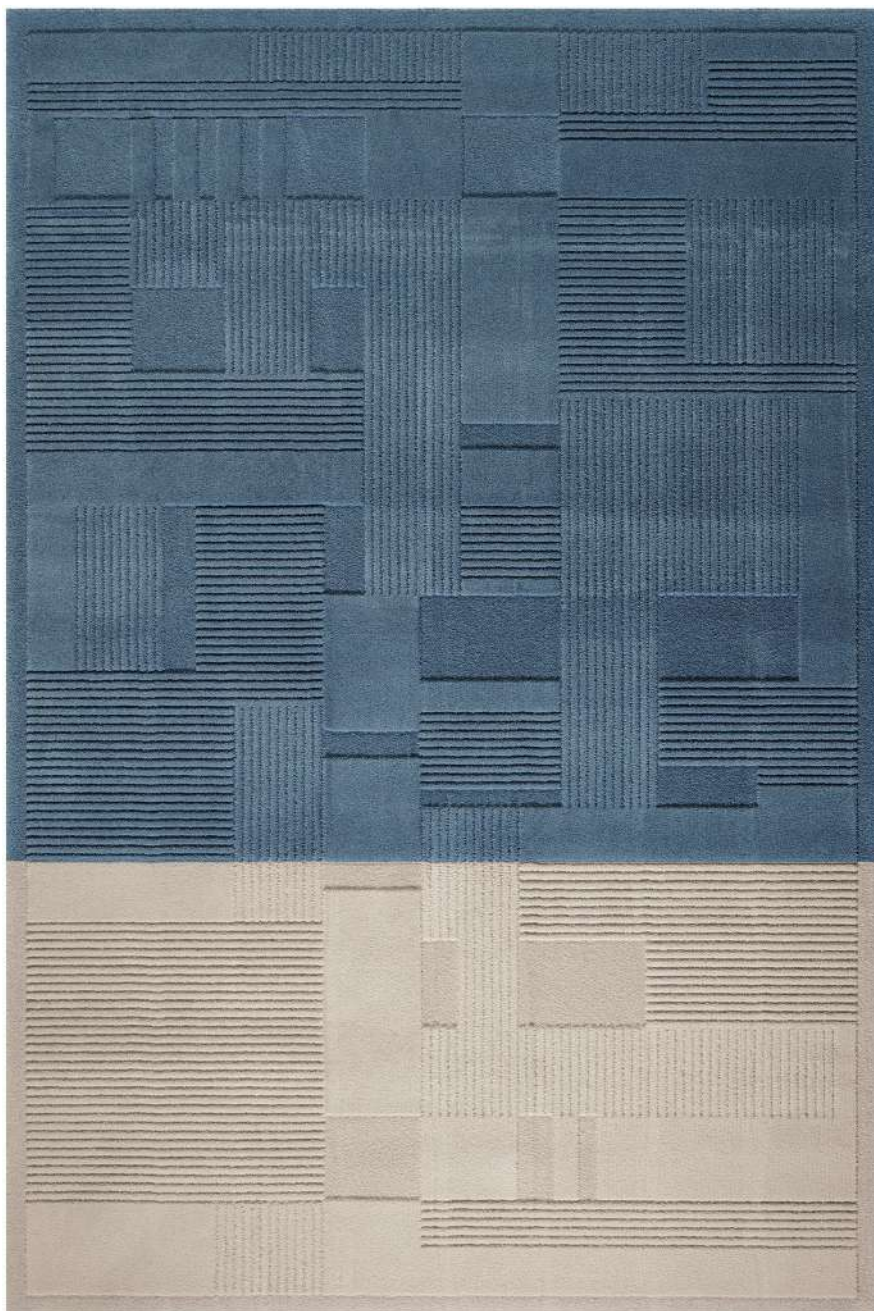






# TOPIARY DUO

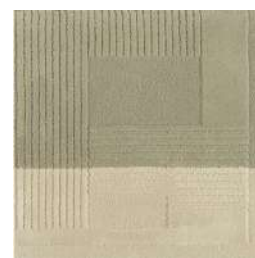
Lagoon



Other colour options:



TOPIARY DUO Pale



TOPIARY DUO Khaki



TOPIARY DUO Corn



TOPIARY DUO Jam

## Technical Information:

Composition: Bamboo | Size: 200x300cm | Price Band: 2

When ordering our Bamboo rugs, please indicate the required shape. On page 39 are some suggestions.

\*We advise to only use our printed or digital formats for colour reference purposes. Despite our colour corrections efforts and perfectionism when developing printed and digital formats, it's impossible to guarantee a 100% true match in colour. These formats do not replace the use of our pompoms and real samples when choosing and ordering our rugs.

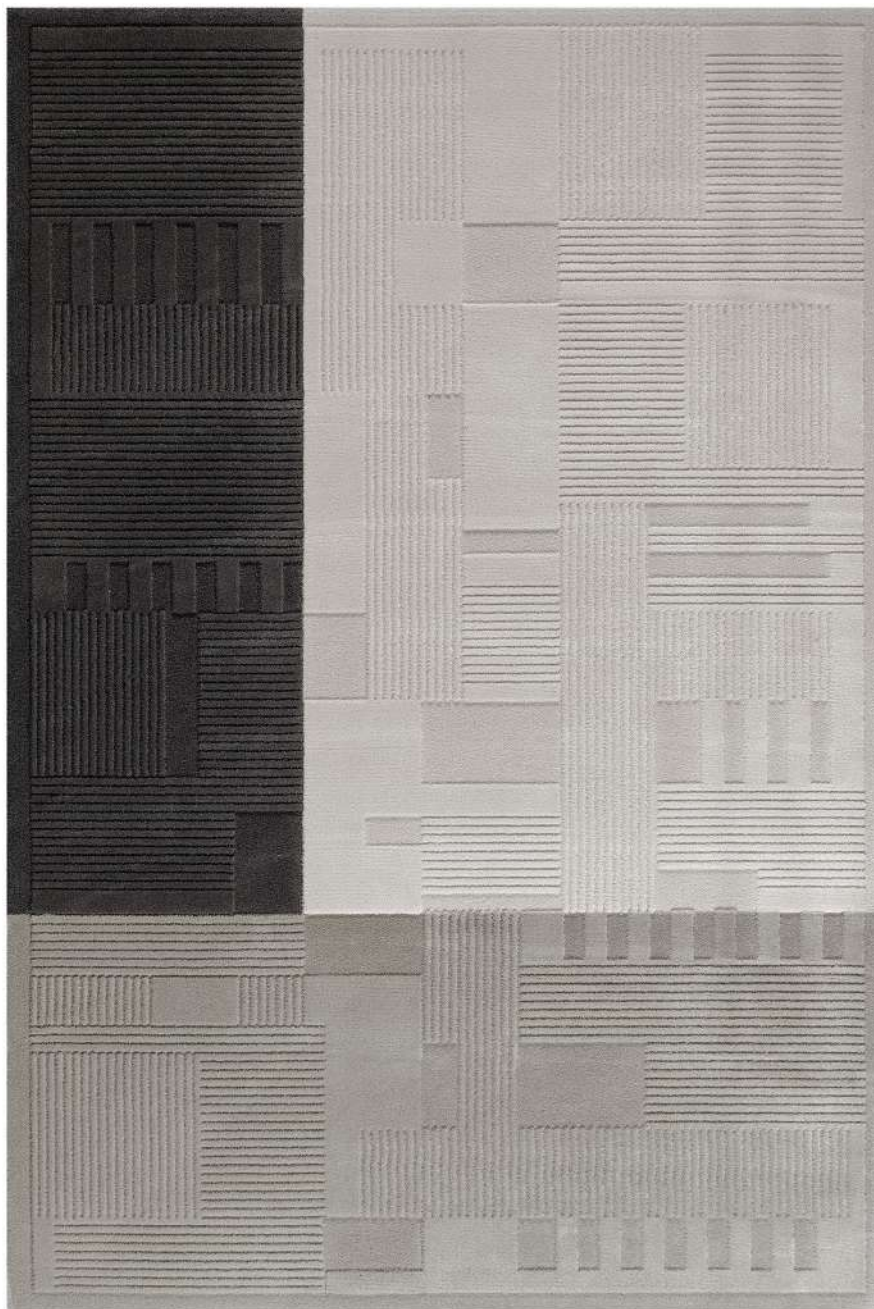






# TOPIARY CONCRETE

Silver



## Technical Information:

Composition: Bamboo | Size: 200x300cm | Price Band: 2

When ordering our Bamboo rugs, please indicate the required shape. On page 39 are some suggestions.

\*We advise to only use our printed or digital formats for colour reference purposes. Despite our colour corrections efforts and perfectionism when developing printed and digital formats, it's impossible to guarantee a 100% true match in colour. These formats do not replace the use of our pompoms and real samples when choosing and ordering our rugs.

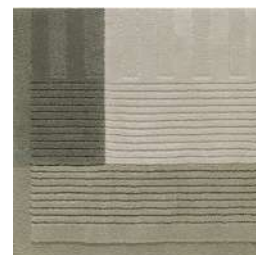
Other colour options:



TOPIARY CONCRETE Tan



TOPIARY CONCRETE Biscotti



TOPIARY CONCRETE Fungi



TOPIARY CONCRETE Brun

## FRESQUE

Baja

Other colour options:



FRESQUE Sahara



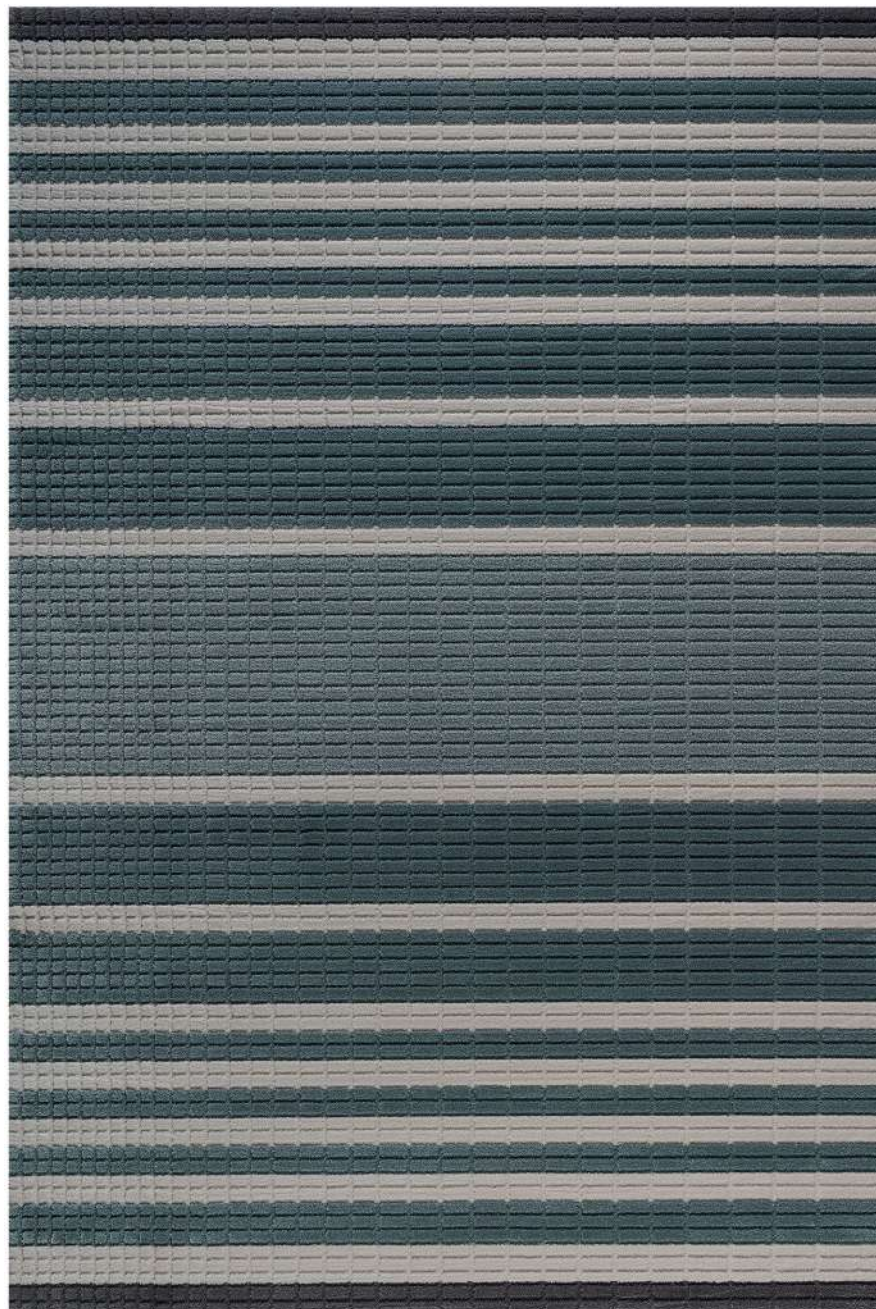
FRESQUE Jaipur



FRESQUE Biome



FRESQUE Afro



## Technical Information:

Composition: Bamboo | Size: 200x300cm | Price Band: 3

When ordering our Bamboo rugs, please indicate the required shape.

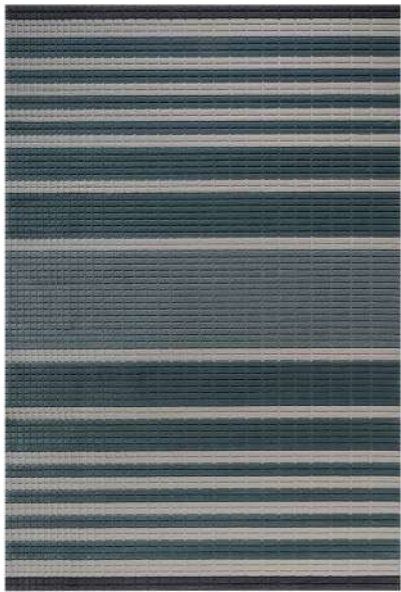
\*We advise to only use our printed or digital formats for colour reference purposes. Despite our colour corrections efforts and perfectionism when developing printed and digital formats, it's impossible to guarantee a 100% true match in colour. These formats do not replace the use of our pompoms and real samples when choosing and ordering our rugs.





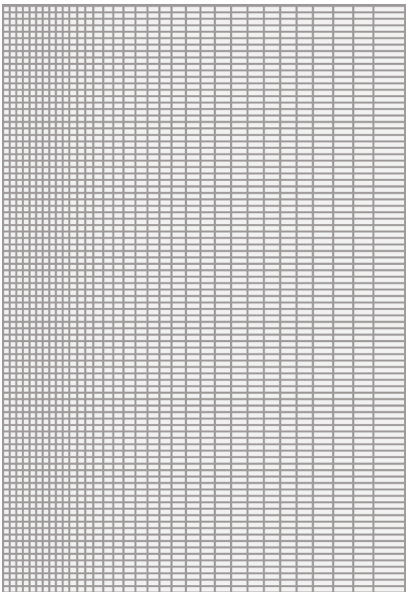
# FRESQUE

We seek to develop solutions that meet the needs and tastes of our customers. In this specific case, you can choose to order this rug with colour stripes or in one solid colour only. Please note that the price band varies depending on this choice.



FRESQUE Colour Stripes  
Price Band: 3

Mono colour  
transformation



FRESQUE Mono Colour  
Price Band: 0

\*Mono colour sample on the right page







## PURE BAMBOO

Powder

Other colour options:



PURE BAMBOO Gold Stone



PURE BAMBOO Light Ruby



PURE BAMBOO Anthracite



PURE BAMBOO Slate Grey



## Technical Information:

Composition: Bamboo | Size: 200x300cm | Price Band: 0

When ordering our Bamboo rugs, please indicate the required shape. On page 38 are some suggestions.

\*We advise to only use our printed or digital formats for colour reference purposes. Despite our colour corrections efforts and perfectionism when developing printed and digital formats, it's impossible to guarantee a 100% true match in colour. These formats do not replace the use of our pompoms and real samples when choosing and ordering our rugs.







ERTÉ

Iron

Other colour options:



ERTÉ Ivory



ERTÉ Sand



ERTÉ Cocoon



ERTÉ Brushed Nickel



Technical Information:

Composition: Bamboo | Size: 200x300cm | Price Band: 0

When ordering our Bamboo rugs, please indicate the required shape. On page 41 are some suggestions.

\*We advise to only use our printed or digital formats for colour reference purposes. Despite our colour corrections efforts and perfectionism when developing printed and digital formats, it's impossible to guarantee a 100% true match in colour. These formats do not replace the use of our pompoms and real samples when choosing and ordering our rugs.







## GRACEFUL

Cocoon

Other colour options:



GRACEFUL Sand



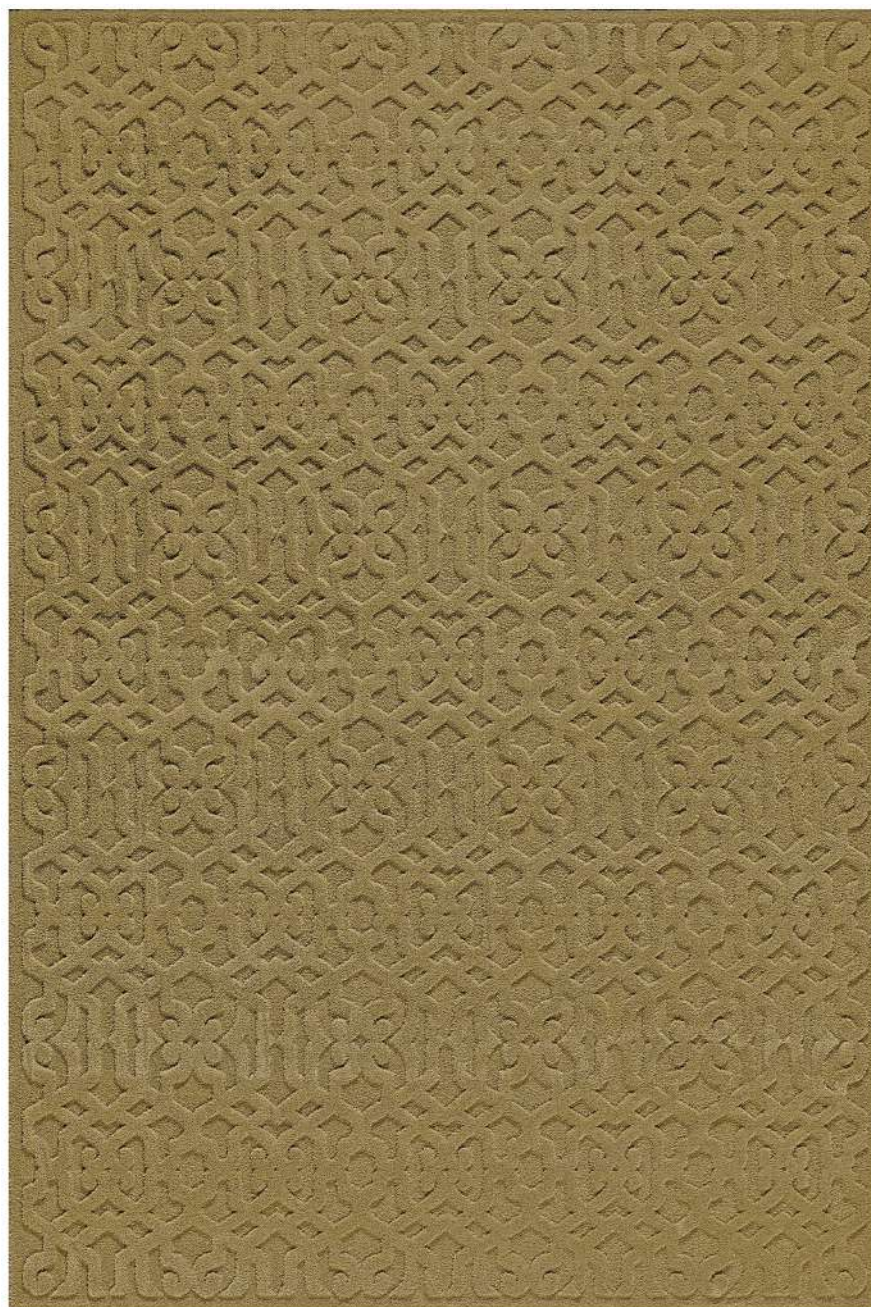
GRACEFUL Golden Brown



GRACEFUL Plum



GRACEFUL Slate Grey



## Technical Information:

Composition: Bamboo | Size: 200x300cm | Price Band: 0

When ordering our Bamboo rugs, please indicate the required shape. On page 38 are some suggestions.

\*We advise to only use our printed or digital formats for colour reference purposes. Despite our colour corrections efforts and perfectionism when developing printed and digital formats, it's impossible to guarantee a 100% true match in colour. These formats do not replace the use of our pompoms and real samples when choosing and ordering our rugs.





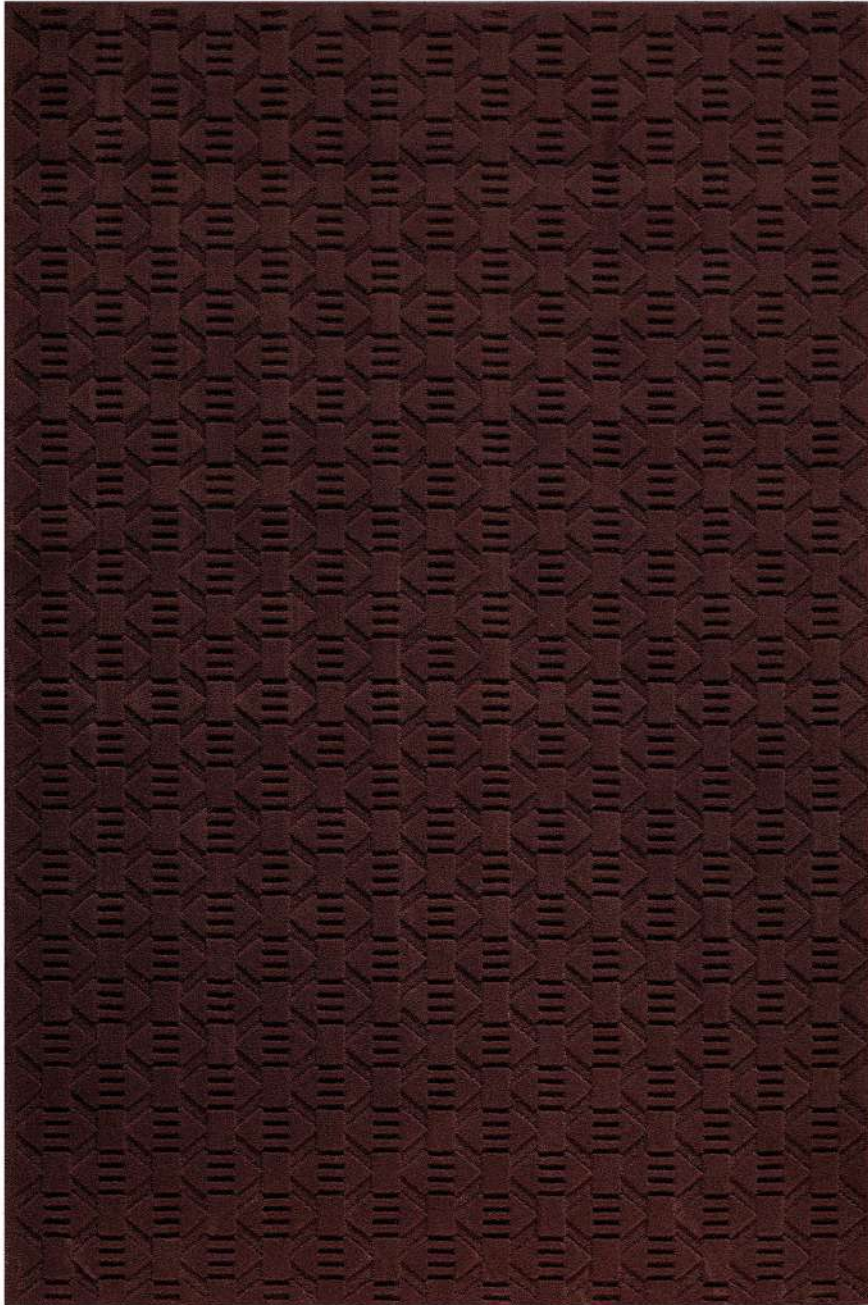






# WICKER

Plum



Other colour options:



WICKER Cream



WICKER Honey



WICKER Steel



WICKER Cactus

## Technical Information:

Composition: Bamboo | Size: 200x300cm | Price Band: 0

When ordering our Bamboo rugs, please indicate the required shape. On page 41 are some suggestions.

\*We advise to only use our printed or digital formats for colour reference purposes. Despite our colour corrections efforts and perfectionism when developing printed and digital formats, it's impossible to guarantee a 100% true match in colour. These formats do not replace the use of our pompoms and real samples when choosing and ordering our rugs.

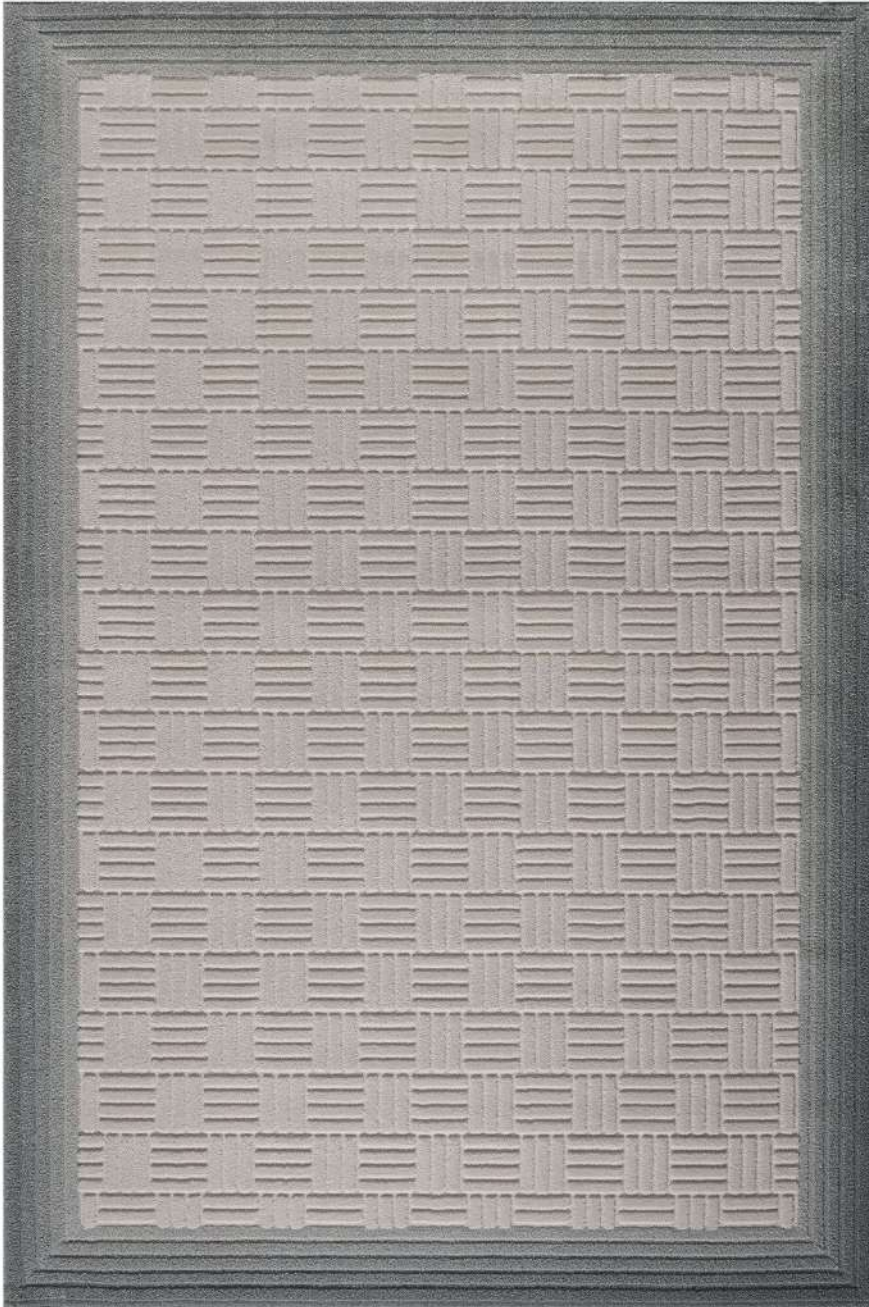




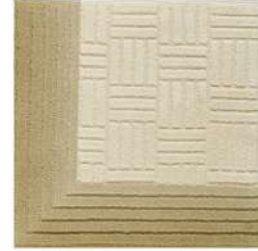


# CRISSCROSS

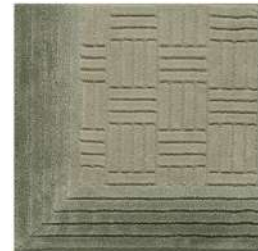
Cloud



Other colour options:



CRISSCROSS Amber



CRISSCROSS Stone Green



CRISSCROSS Marsala



CRISSCROSS Wine

## Technical Information:

Composition: Bamboo | Size: 200x300cm | Price Band: 3

When ordering our Bamboo rugs, please indicate the required shape.

\*We advise to only use our printed or digital formats for colour reference purposes. Despite our colour corrections efforts and perfectionism when developing printed and digital formats, it's impossible to guarantee a 100% true match in colour. These formats do not replace the use of our pompoms and real samples when choosing and ordering our rugs.

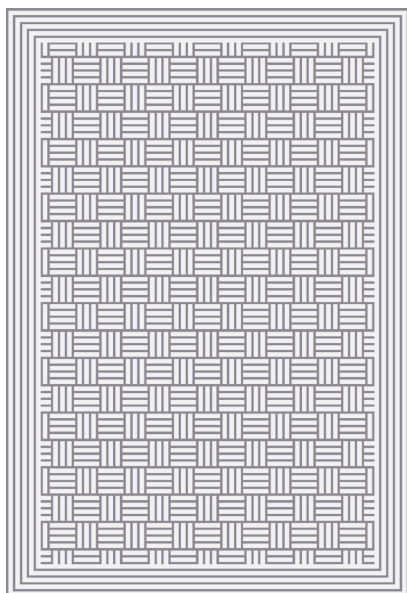






## CRISSCROSS

We seek to develop solutions that meet the needs and tastes of our customers. In this specific case, you can choose to order this rug with gradient border or in one solid colour only. Please note that the price band varies depending on this choice.



Mono colour  
transformation



CRISSCROSS Mono Colour  
Price Band: 0

\*Mono colour sample on the left page

CRISSCROSS Gradient Border  
Price Band: 3







# TELHA

Walnut



Other colour options:



TELHA Ecu



TELHA Golden Brown



TELHA Agave Green



TELHA Plum

## Technical Information:

Composition: Bamboo | Size: 200x300cm | Price Band: 0

When ordering our Bamboo rugs, please indicate the required shape. On page 40 are some suggestions.

\*We advise to only use our printed or digital formats for colour reference purposes. Despite our colour corrections efforts and perfectionism when developing printed and digital formats, it's impossible to guarantee a 100% true match in colour. These formats do not replace the use of our pompoms and real samples when choosing and ordering our rugs.







# WHORL

Aspen



Other colour options:



WHORL African Sand



WHORL Sand



WHORL Falcon



WHORL Dark Brown

## Technical Information:

Composition: Bamboo | Size: 200x300cm | Price Band: 0

When ordering our Bamboo rugs, please indicate the required shape. On page 38 are some suggestions.

\*We advise to only use our printed or digital formats for colour reference purposes. Despite our colour corrections efforts and perfectionism when developing printed and digital formats, it's impossible to guarantee a 100% true match in colour. These formats do not replace the use of our pompoms and real samples when choosing and ordering our rugs.







# ANEMONE

Bisque



Technical Information:

Composition: Bamboo | Size: Ø200cm | Price Band: 2

When ordering our Bamboo rugs, please indicate the required shape. On page 40 are some suggestions.

Other colour options:



ANEMONE Sage



ANEMONE Dove



ANEMONE Gold



ANEMONE Sea Salt

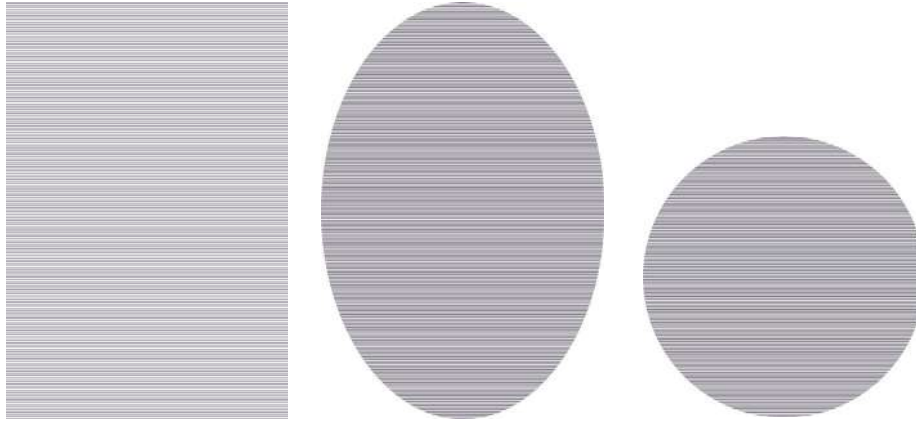
\*We advise to only use our printed or digital formats for colour reference purposes. Despite our colour corrections efforts and perfectionism when developing printed and digital formats, it's impossible to guarantee a 100% true match in colour. These formats do not replace the use of our pompoms and real samples when choosing and ordering our rugs.



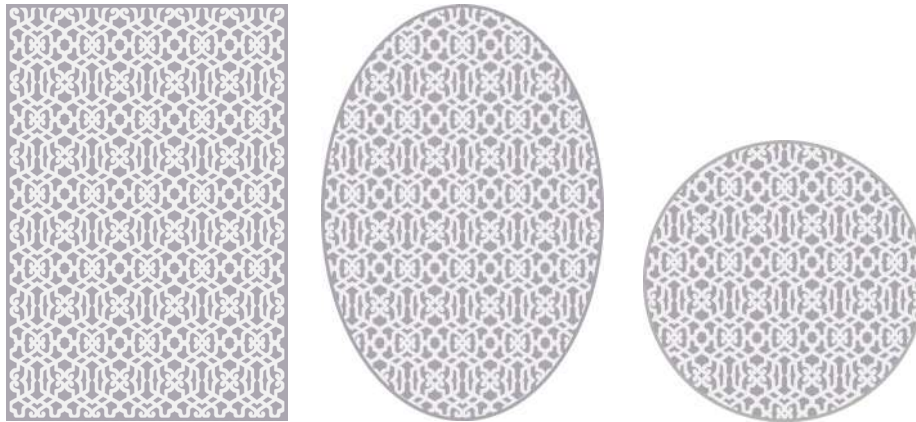
## OTHER SHAPES

Our rugs were developed to provide the best solutions for our clients. Below you will find several shape options available that will certainly fulfill your needs.

### PURE BAMBOO



### GRACEFUL



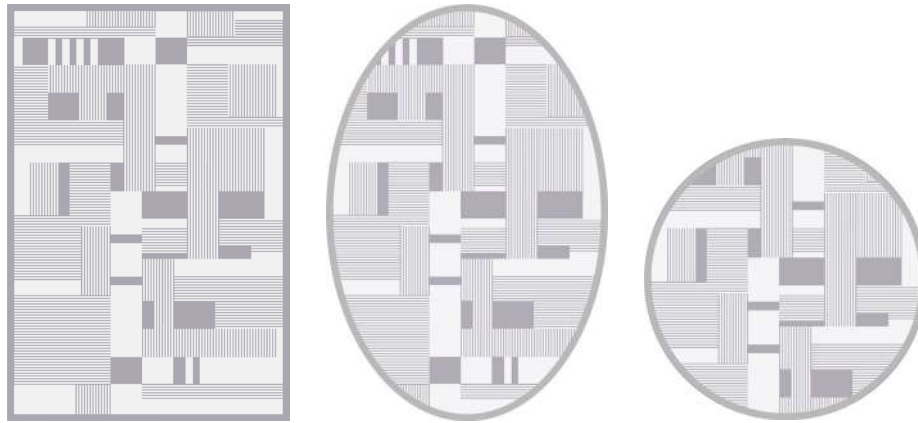
### WHORL



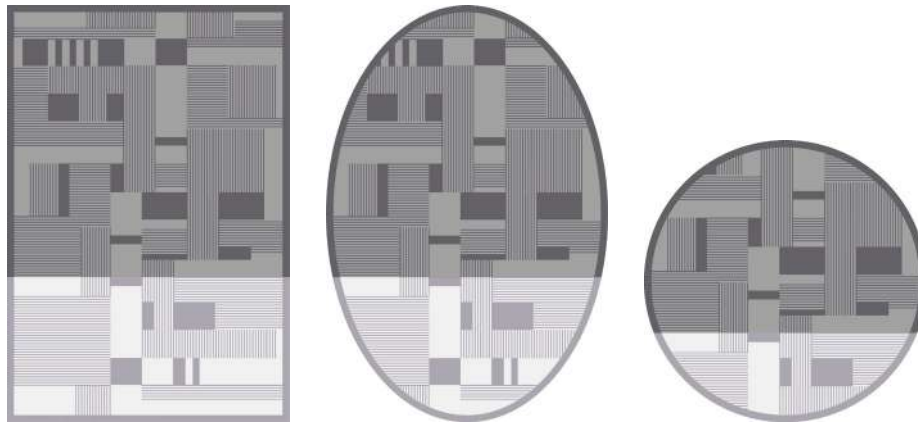
\*Other shapes available upon request.



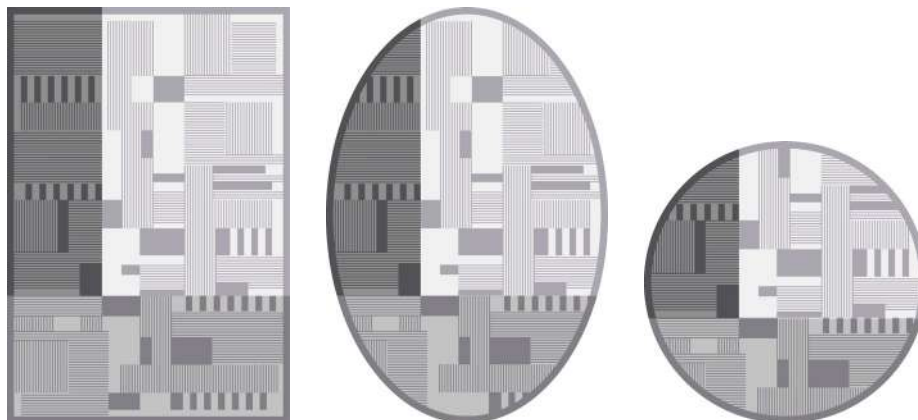
### TOPIARY



### TOPIARY DUO



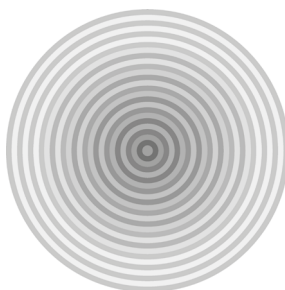
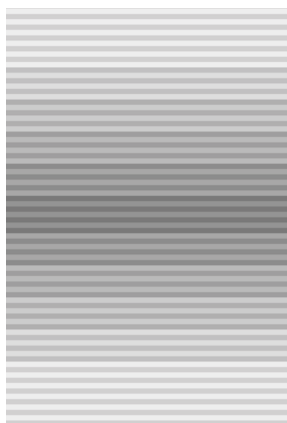
### TOPIARY CONCRETE



\*Other shapes available upon request.



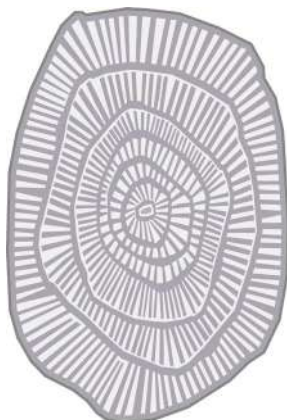
## GESTURE



## TELHA



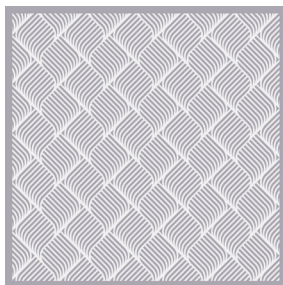
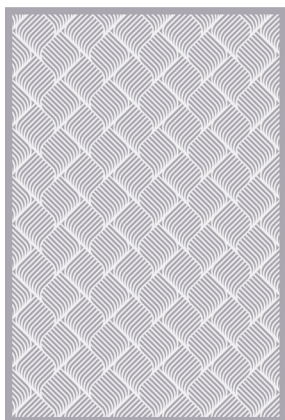
## ANEMONE



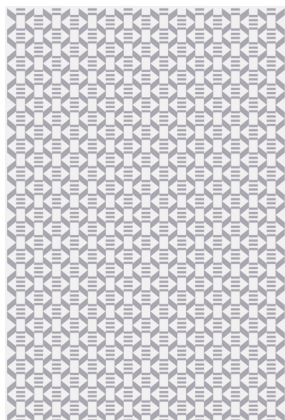
\*Other shapes available upon request.



## ERTÉ



## WICKER



\*Other shapes available upon request.



## KNOW YOUR RUG

All our rugs are made with understanding and expertise. Either handmade by skilled craftsmen, or in a specialty manufacturing facility. All rugs are finished with care and are quality checked before shipment. Each type of rug needs specific care to ensure a certain longevity. The following simple facts will help you understand your rug.

### **SHEDDING:**

All cut pile rugs will shed. Shedding is caused by fibres in the yarn that are cut short and get detached from the pile. The Bamboo fibres are delicate but resistant which provides no shedding throughout the years.

### **SPROUTS:**

Loose fibres, or 'sprouts', are a normal part of the break-in process of handmade rugs but Bamboo fibres provide no sprout development throughout the years.

### **CREASES:**

When your rug has been rolled or folded for shipping, it may include creases. These should disappear within a week or two when the rug is laid out flat. Rolling the rug in reversed way overnight will help. Making sure the humidity in the room is high enough (+/- 50-60%) will make decreasing the rug easier.

### **SHADING:**

Shading is an effect occurring due to the change of light reflection, which shows when the rug is subtly track marked. This is characteristic for most pile rugs and will reverse naturally during use.

### **SIZE:**

Deviations up to 3% in the sizes are possible, since rugs are a textile and therefore flexible product. Handmade rugs may vary in size slightly, as each piece is unique!



### COLOUR:

No two rugs are the same. Slight colour variations are common for handmade rugs, as dye lots may slightly differ over a period of time.

### WEAR:

It is highly recommended to rotate your rug 180 degrees every 3-6 months to balance appearance and to distribute wear evenly.

### FADING:

When exposed to direct sunlight, rug colours typically fade over time, even if they are fade resistant.

### ODOUR:

Smells are caused by dyes, yarns and shipping for long distances in sealed wrap. Most odours will vanish within a week once the rug is removed from its packaging.

### CERTIFICATIONS:



Colour Fastness to Light:  
4-5 [scale 1-5 best result 5]



Thermal Resistance:  
0,075 m2K/W

Colour Fastness to Water:  
5 [scale 1-5 best result 5]



Fire Resistance:  
Cfl-s1



## CARE AND MAINTENANCE

Taking care of any rug properly is key to ensuring their beauty is kept for many years.

### GENERAL NOTES:

The level of maintenance required by a tapestry depends on the degree of exposure to dirt and existing traffic, because daily dirtiness usually originates from factors such as open windows, construction works in the vicinity, the presence of children or pets, among others. The habit of taking your shoes off when entering the house makes rug maintenance easier and less frequent, because 50% of dirt in tapestries usually comes from shoe wear.

It is important to rotate rugs regularly so that wearing is uniform over the years.

Direct, intense exposure to sunlight should be avoided whenever possible because it can affect light tones negatively by turning them into more pinkish, yellowish tones, which strongly impacts the tapestry. To make sure that your tapestry's luminosity and shine are not affected and your rug keeps looking good, we recommend that you use a good vacuum system regularly with an average power of 2000W.

### STAINS:

To treat stains, we recommend that you visually inspect your rug every day to check for the origin of the stain and so that you can act immediately, as removing a fresh stain is simpler and more effective. Removing stains without knowing their origin is harder and can damage your tapestry.

Here are some recommendations for everyday stains:

### LIQUID:

Use paper towels or a white absorbing cloth to absorb and dry the stain right away (do not use coloured paper or cloths, because their colour can be transferred to the rug and make the problem worse).

Where you need to use rug detergents, we highly recommend that you test the detergent on a small area of your tapestry to see whether the detergent is effective and to guarantee good results. This type of cleaning should always be superficial. Do not soak your rug.



## SOLID:

Where you find it difficult to remove solid, dry stains, try to scrape them and vacuum using a strong vacuum system.

You can also dissolve the stain using a recommended rug solvent or detergent. After you have softened the solid stain, try to remove it using a knife or spatula, scraping from the outside to the inside of the stain.

For more deep, thorough cleaning, we recommend that you contact a company that specialises in cleaning rugs, whenever necessary.

## BAMBOO TOOL SET

When choosing the perfect rug we always advise using our collection tools for a true representation of colours and accurate feel of the raw material. In this particular case we recommend the use of our Bamboo pompom colour box, with 60 unique colours to provide ease and fast decision making.









## GET IN TOUCH

@ferreiradesarugs



### FACTORY AND SHOWROOM

Tapeçarias Ferreira de Sá, S.A.

Rua Ferreira de Sá, 50 - Silvalde 4500-629 Espinho | Portugal

Phone: (+351) 227 333 070 | Fax: (+351) 227 333 079

**[www.ferreiradesa.com](http://www.ferreiradesa.com) | [info@ferreiradesa.com](mailto:info@ferreiradesa.com)**



**SPECIAL THANKS TO:**

António Teixeira - Photographer









