

## Spritz table 59x59x40

by Archirivolto Design

Spritz, designed by Archirivolto Design, captures the essence of summer evenings with a line of outdoor furniture that combines simplicity and functionality. Inspired by white beach fences and their delicate geometries, each piece brings a touch of freshness and elegance to an outdoor space.

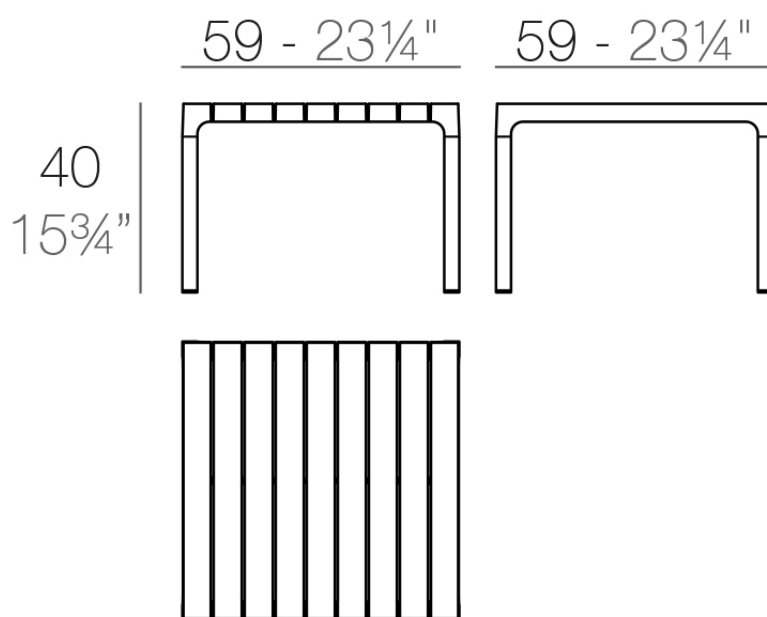


## Info

---

### Description

Weight: 4.84 Kg



SPRITZ Mesa Baja  
SPRITZ Low Table

## Finishes

---

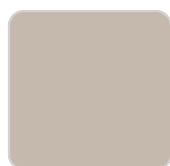
### finishes

---

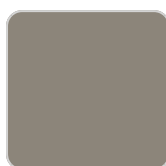
BASIC PP  
Ref. 56030



white



ecru



tortora



black

Available in various colors

